

Instructions Manual

Manuel d'Instructions

Bedienungsanleitung

Manual de instrucciones

Εγχειρίδιο οδηγιών

Руководство по эксплуатации

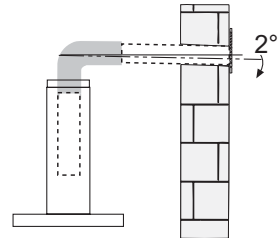
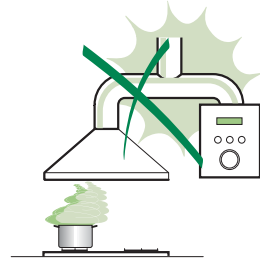
دليل التركيب

RECOMMENDATIONS AND SUGGESTIONS

⚠ The Instructions for Use apply to several versions of this appliance. Accordingly, you may find descriptions of individual features that do not apply to your specific appliance.

INSTALLATION

- The manufacturer will not be held liable for any damages resulting from incorrect or improper installation.
- The minimum safety distance between the cooker top and the extractor hood is 650 mm (some models can be installed at a lower height, please refer to the paragraphs on working dimensions and installation).
- Check that the mains voltage corresponds to that indicated on the rating plate fixed to the inside of the hood.
- For Class I appliances, check that the domestic power supply guarantees adequate earthing. Connect the extractor to the exhaust flue through a pipe of minimum diameter 120 mm. The route of the flue must be as short as possible.
- Do not connect the extractor hood to exhaust ducts carrying combustion fumes (boilers, fireplaces, etc.).
- If the extractor is used in conjunction with non-electrical appliances (e.g. gas burning appliances), a sufficient degree of aeration must be guaranteed in the room in order to prevent the backflow of exhaust gas. The kitchen must have an opening communicating directly with the open air in order to guarantee the entry of clean air. When the cooker hood is used in conjunction with appliances supplied with energy other than electric, the negative pressure in the room must not exceed 0,04 mbar to prevent fumes being drawn back into the room by the cooker hood.
- In the event of damage to the power cable, it must be replaced by the manufacturer or by the technical service department, in order to prevent any risks.
- If the instructions for installation for the gas hob specify a greater distance specified above, this has to be taken into account. Regulations concerning the discharge of air have to be fulfilled.

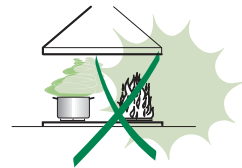



USE

- The extractor hood has been designed exclusively for domestic use to eliminate kitchen smells.
- Never use the hood for purposes other than for which it has been designed.
- Never leave high naked flames under the hood when it is in operation.
- Adjust the flame intensity to direct it onto the bottom of the pan only, making sure that it does not engulf the sides.
- Deep fat fryers must be continuously monitored during use: overheated oil can burst into flames.
- Do not flambé under the range hood; risk of fire
- This appliance is not intended for use by persons (including children) with reduced physical, sensory or mental capabilities, or lack of experience and knowledge, unless they have been given supervision or instruction concerning use of the appliance by a person responsible for their safety.
- Children should be supervised to ensure that they do not play with the appliance.
- "CAUTION: Accessible parts may become hot when used with cooking appliances."

MAINTENANCE

- Switch off or unplug the appliance from the mains supply before carrying out any maintenance work.
- Clean and/or replace the Filters after the specified time period (Fire hazard).
- Clean the hood using a damp cloth and a neutral liquid detergent.



The symbol  on the product or on its packaging indicates that this product may not be treated as household waste. Instead it shall be handed over to the applicable collection point for the recycling of electrical and electronic equipment. By ensuring this product is disposed of correctly, you will help prevent potential negative consequences for the environment and human health, which could otherwise be caused by inappropriate waste handling of this product. For more detailed information about recycling of this product, please contact your local city office, your household waste disposal service or the shop where you purchased the product.

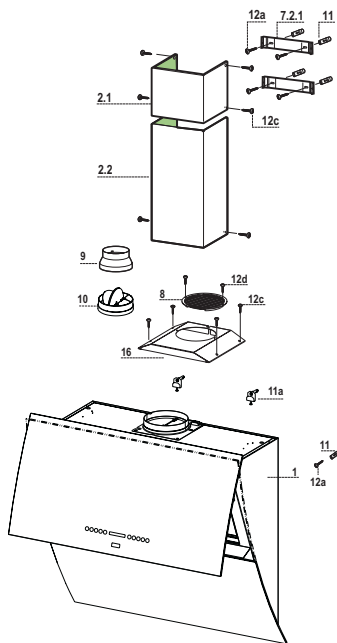
CHARACTERISTICS

Components

Ref.	Q.ty	Product components
1	1	Cooker hood with control unit, lights, blower unit, filters
2.1	1	Upper chimney
2.2	1	Lower chimney
8	1	Air outlet grid
9	1	Reducer flange Ø 150-120
10	1	Damper (Optional)
16	1	Cover for recycling version

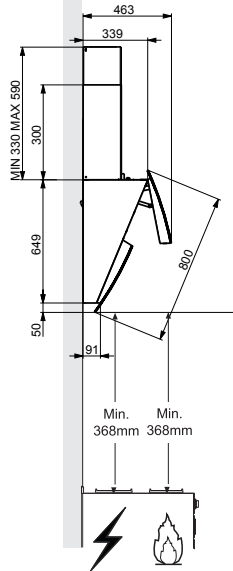
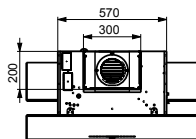
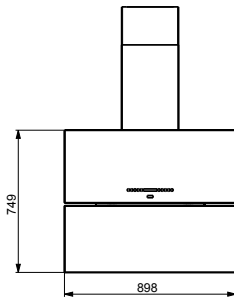
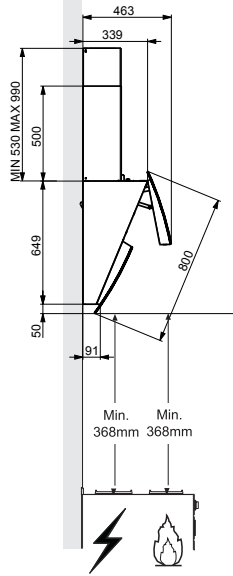
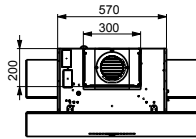
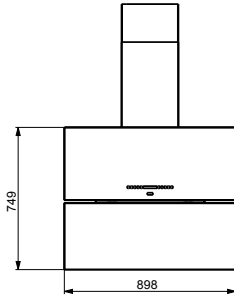
Ref.	Q.ty	Installation components
7.2.1	2	Fixing brackets for upper chimney
11	5	Plugs
11a	2	Plugs SB 12/10
12a	5	Screws 4,2 x 44,4
12c	10	Screws 2,9 x 6,5
12e	2	Screws 2,9 x 9,5

Q.ty	Documentation
1	Instruction booklet



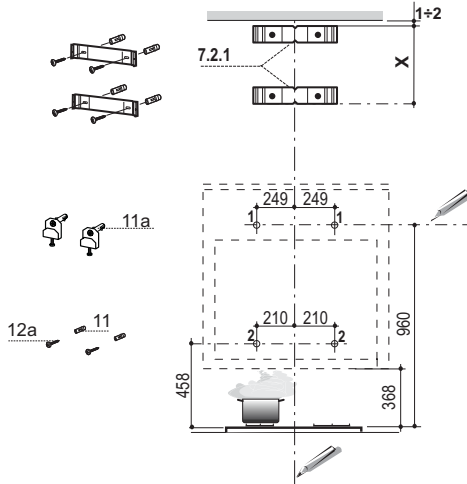
Dimensions

The dimensions depend on the chosen version



INSTALLATION

Wall drilling and bracket fixing



As a first step, proceed with the following drawings:

- a vertical line up to the ceiling or up to the upper limit, at the centre of the area in which the hood is to be fitted;
- a horizontal line at a minimum 960 mm above the cooker top.
- Mark a point **(1)** on the horizontal line, 249 mm to the right of the vertical reference line.
- Repeat this operation on the other side, checking that the two marks are levelled.
- Mark a reference point **(2)** as indicated at 210 mm from the vertical reference line and 458 mm above the cooker top.
- Repeat this operation on the other side, checking that the two marks are levelled.
- Drill at the marked points **(1)**, using a \varnothing 12 mm drill bit.
- Drill at the marked point **(2)**, using a \varnothing 8 mm drill bit.
- Insert the bracket plugs **11a** into the holes **(1)** and tighten the screws.
- Insert plug **11** into hole **(2)**.
- Place bracket **7.2.1** on the wall, about 1-2 mm from the ceiling or from the upper limit, aligning the centre (notch) with the vertical reference line.
- Mark the wall at the centres of the bracket holes.
- Place the bracket **7.2.1** on the wall at X mm below the first bracket (X = height of the upper chimney section), aligning the centre (notch) with the vertical line.
- Mark the wall at the centres of the bracket holes.
- Drill \varnothing 8 mm holes at all the marked centre points.
- Insert the wall plugs **11** in the holes.
- Fix the brackets using the **12a** screws (4,2 x 44,4) supplied with the hood.

Fitting the Hood canopy

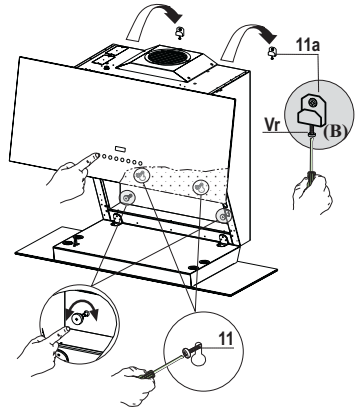
- Adjust the two screws **Vr**, in the brackets **11a**, so that they are at the start of their travel (**B**).
- Hook the hood body to the two brackets **11a**.
- Connect the Hood to the Mains Power Supply, inserting a bipolar switch with a contact aperture of at least 3mm.
- Open the top panel. (See the paragraph on USE)
- Open the Bottom Door by pulling it downwards with your hands.
- Remove the Metal Grease Filters using the handles provided.
- From the inside of the hood body, turn screws **Vr** to level the hood body itself.

Warning: should the rear wall not be completely flat and cause the two glass panels not to be aligned, pls turn on the two knobs in the lower part inside the hood body until you reach the perfect alignment of the two glass panels.

- Fasten the safety screw **11**.
- Replace the Metal Grease Filters, then shut the top panel. (See the paragraph on USE)
- Disconnect the hood from the mains power supply.

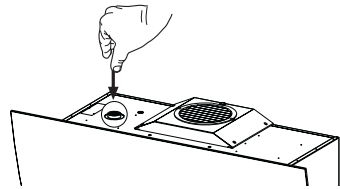
Warning: Should the door encounter an obstacle while opening or closing it will block. When the obstacle is removed and the button is pressed again the door will open.

Warning: In the event of a malfunction, check the fuse.



Replacing the fuser

- The fuser is placed up on the left side. Turn the fuser holder as indicated. Replace the fuser with one having the same features.



Connections

DUCTED VERSION AIR EXHAUST SYSTEM

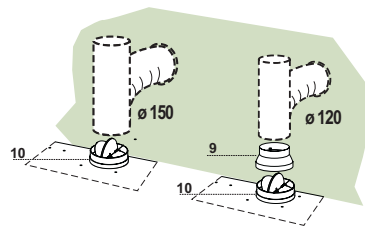
When installing the ducted version, connect the hood to the chimney using either a flexible or rigid pipe \varnothing 150 or 120mm, the choice of which is left to the installer.

To install a \varnothing 150 pipe

- To install the dumper **10**
- Fix the pipe in position using sufficient pipe clamps (not supplied).

To install a \varnothing 120 pipe

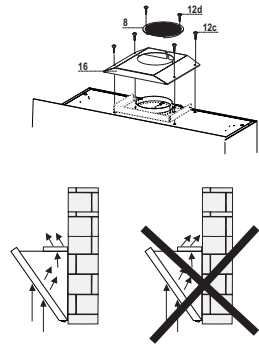
- To install a \varnothing 120 mm air exhaust connection, insert the reducer flange **9** on the dumper **10**.
- Fix the pipe in position using sufficient pipe clamps (not supplied).
- Remove any activated charcoal filters.



RECYCLING VERSION AIR OUTLET

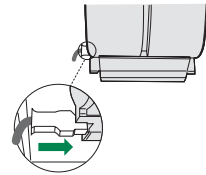
To install the hood in recycling version, the optional charcoal filter kit must be purchased.

- Remove the chimney angle bracket.
- Screw the filter cover onto the air outlet, using four screws **12c** (2,9 x 12,5).
- Fix the air outlet grid **8** on the recirculation air outlet using the 2 screws **12d** (2,9 x 9,5) provided.



ELECTRICAL CONNECTION

- Connect the hood to the mains supply.
- Open the upper panel by pressing the **A**-key (See Part “USE”) for at least 2 seconds.
- Remove the metal filters (See Part “MAINTENANCE”) and make sure that the connector piece of the supply cable is correctly inside the hood socket.



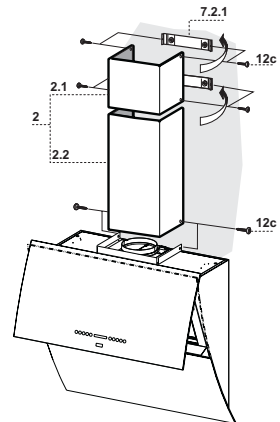
Chimney assembly

Upper exhaust Chimney

- Slightly widen the two sides of the upper chimney and hook them behind the brackets **7.2.1**, making sure that they are well seated.
- Secure the sides to the brackets using the 4 screws **12c** (2,9 x 9,5) supplied.

Lower exhaust Chimney

- Slightly widen the two sides of the chimney and hook them between the upper chimney and the wall, making sure that they are well seated.
- Fix the lower part laterally to the hood body using the 2 screws **12c** (2,9 x 9,5) supplied.



USE

Control panel



Button	Function	Display
A	Door Closed: Press and hold for approximately 2 Seconds to open the door and turn the motor on at the last speed set. Door Open: Press briefly to turn the motor Off or On.	Displays the set speed.
B	Decreases the working speed.	The number of lighted segments decreases.
C	Increases the working speed.	The number of lighted segments increases.
D	Activates/Deactivates Intensive speed. This speed is timed to run for 10 minutes. At the end of this time the system will automatically return to the speed set before. Suitable to deal with maximum levels of cooking fumes. Cannot be activated when in 24H mode. Press and hold the button for approximately 5 seconds, with all the loads turned off (Motor and Lights) and no alarms in progress, to turn the Activated Charcoal Filter Alarm On / Off.	The indicator I flashes and all the segments on the Display are lit. Button "C" flashes twice – Alarm On. Button "C" flashes once – Alarm Off.
E	Activates/Deactivates 24H speed. This starts the motor at a speed that allows suction of 100 m3/h for 10 minutes every hour. This mode cannot be activated if Intensive or Delay modes are active. Press and hold the button for approximately 5 seconds, with all the loads turned off (Motor and Lights) and no alarms triggered, to turn the Remote control On / Off.	Displays 24 and the segments on the Display light up in cycle. (Motor LED bar flashes twice) - Remote control On. (Motor LED bar flashes once) - Remote control Off.
F	Activate / Deactivate Delay. Can be activated with motor on (except for Intensive and 24H mode). Activates automatic shutdown of the Motor and the Lighting with a 30' delay. Press and hold for 5 Seconds to Activate / Deactivate Lock Keyboard mode for example in order to clean the Glass.	Displays a Clock symbol. The Leds light up and run a start-up sequence.
G	Performs a Reset of the Filter saturation alarm when the button is pressed for approximately 3 seconds when all the users (motor + lights) are turned off	After 100 hours in operation the Drop symbol is displayed to indicate saturation of the Metal Grease Filters. After 200 hours in operation the letter C is displayed to indicate saturation of the Activated Charcoal filters.
H	Modifies the intensity of the Lighting each time the Button is pressed, in cycle.	-
I	Door Closed: When pressed and held for approximately 2 seconds opens the door half way and turns the lighting on to maximum intensity. The intensity can be modified using button H. - When the button is pressed again, the lighting turns off and the door closes. - When button A is pressed, the Lights turn off and the motor only works at the first two speeds. Door Open: Press briefly to turn the lighting On or Off	-
L	Door Closed: Press and hold for approximately 2 Seconds to open the door, turn the motor on at speed three and turn the lighting on at maximum intensity. Door Open: When pressed and held for approximately 2 seconds turns off the motor and the lighting, cancelling any function that may be active and closing the door.	-

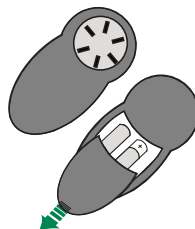
Warning:

During the Opening and Closing phase the panel has a guard device that reverses the direction of movement in the event of blockage during the movement itself. It performs a maximum of 6 attempts before the " " icon flashes to indicate actual blockage. At this point, remove the obstacle preventing movement if possible, then press and hold button L for 2 seconds. The panel will once again make a maximum of 6 attempts to close or open before reverting to blocked status if movement is not successful. In this case it will be necessary to call the Technical Service Department.

REMOTE CONTROL

The appliance can be controlled using a remote control powered by a 1.5 V carbon-zinc alkaline batteries of the standard LR03-AAA type (not included).

- Do not place the remote control near to heat sources.
- Used batteries must be disposed of in the proper manner.



Remote control panel



⏻	Motor	Door Closed: Opens the door and turns the motor on at the last speed set.
		Door Open: Motor On / Off
		Pressed for 2 Seconds: a) If the door is open, Motor + Lights Off. b) If the door is closed, Opens the door and Lights + Motor On.
—		Decreases the working speed each time it is pressed.
+		Increases the working speed each time it is pressed.
ⓘ	Intensive	Activates the Intensive function
⌚	Delay	Activates the Delay function
		Pressed for 2 Seconds: Activates / Deactivates the 24H function
☀️	Light	Door Closed: Opens the door half way and turns the Lights on a Maximum Intensity.
		Door open half way: Turns lights off and closes the door.
		Door Open: Lights On / Off

MAINTENANCE

Metal grease filters

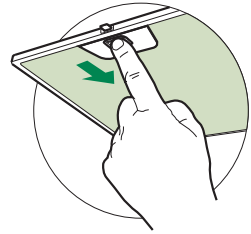
Filters can be washed in the dish machine. They need to be washed when **Drop**-sign appears on the display or in any case every 2 months, or even more frequently in case of particularly intensive use of the hood.

Alarm reset

- Press the **G**-key for at least 2 seconds.

Cleaning the filters

- Open the upper panel by pressing the **A**-key for 1 second (see Part USE).
- Remove the filters one by one pushing them towards the back side of the hood unit and simultaneously pulling downwards.
- Any kind of bending of the filters has to be avoided when washing them. Before fitting them again into the hood make sure that they are completely dry. (The colour of the filter surface may change throughout the time but this has no influence to the filter efficiency).
- When fitting the filters into the hood pay attention that they are mounted in correct position the handle facing outwards.



Activated Charcoal Filter (Recirculation Version)

This cannot be washed or regenerated, and must be changed when the **C** symbol on the display appears, or at least once every 4 months. The Alarm signal must be activated in advance.

Activating the alarm signal

- In Recirculation Version Hoods, the Filter Saturation Alarm must be activated on installation or at a later date.
- Turn the Lights and the Suction Motor off.
- Press and hold button **D** for approximately 5 seconds to enable / disable the A.C. Filters
 - Symbol **C** flashes twice, A.C. Filter saturation alarm ACTIVATED
 - Symbol **C** flashes once, A.C. Filter Saturation alarm DEACTIVATED

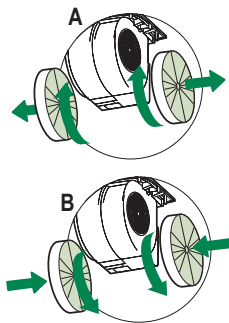
REPLACING THE CHARCOAL FILTER

Alarm reset

- Press the **G**-key for at least 2 seconds.

Replacing the filter

- Open the upper panel by pressing the **A**-key for about a second (see Part USE).
- Remove the metal filters.
- Remove the saturated charcoal filter as indicated (**A**).
- Fit the new filters as indicated (**B**).
- Put the metal grease filters in their seats.



Lighting unit

Warning: This appliance is fitted with a white LED lamp classed as 1M according to EN 60825-1: 1994 + A1:2002 + A2:2001 standards; maximum optical power emitted @439nm: 7µW. Do not look directly at the light through optical devices (binoculars, magnifying glasses...).

- For replacement contact technical support. ("To purchase contact technical support")

Replacing the fuser

- The fuser is placed up on the left side. Turn the fuser holder as indicated. Replace the fuser with one having the same features.

