

Instructions Manual

Manuel d'Instructions

Bedienungsanleitung

Manual de instrucciones

Εγχειρίδιο οδηγιών

Руководство по эксплуатации

Instructions Manual

INDEX

RECOMMENDATIONS AND SUGGESTIONS	8
CHARACTERISTICS	9
INSTALLATION	11
USE	14
MAINTENANCE	15

RECOMMENDATIONS AND SUGGESTIONS

INSTALLATION

- The manufacturer will not be held liable for any damages resulting from incorrect or improper installation.
- The minimum safety distance between the cooker top and the extractor hood is 650 mm.
- Check that the mains voltage corresponds to that indicated on the rating plate fixed to the inside of the hood.
- For Class I appliances, check that the domestic power supply guarantees adequate earthing.

Connect the extractor to the exhaust flue through a pipe of minimum diameter 120 mm. The route of the flue must be as short as possible.

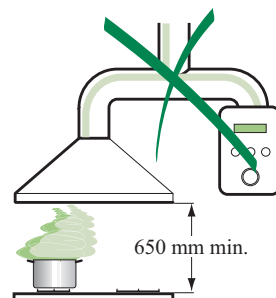
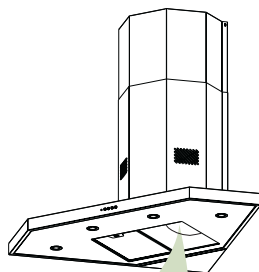
- Do not connect the extractor hood to exhaust ducts carrying combustion fumes (boilers, fireplaces, etc.).
- If the extractor is used in conjunction with non-electrical appliances (e.g. gas burning appliances), a sufficient degree of aeration must be guaranteed in the room in order to prevent the backflow of exhaust gas. The kitchen must have an opening communicating directly with the open air in order to guarantee the entry of clean air.

USE

- The extractor hood has been designed exclusively for domestic use to eliminate kitchen smells.
- Never use the hood for purposes other than for which it has been designed.
- Never leave high naked flames under the hood when it is in operation.
- Adjust the flame intensity to direct it onto the bottom of the pan only, making sure that it does not engulf the sides.
- Deep fat fryers must be continuously monitored during use: overheated oil can burst into flames.
- The hood should not be used by children or persons not instructed in its correct use.

MAINTENANCE

- Switch off or unplug the appliance from the mains supply before carrying out any maintenance work.
- Clean and/or replace the Filters after the specified time period.
- Clean the hood using a damp cloth and a neutral liquid detergent.



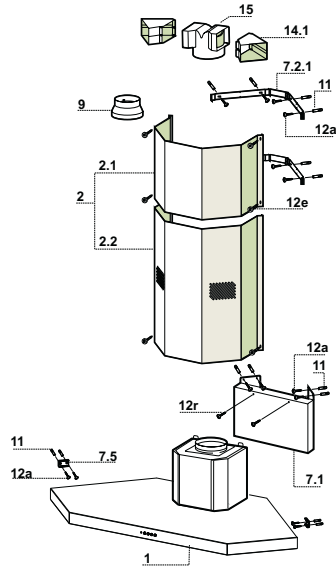
CHARACTERISTICS

Components

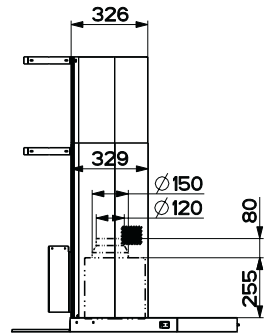
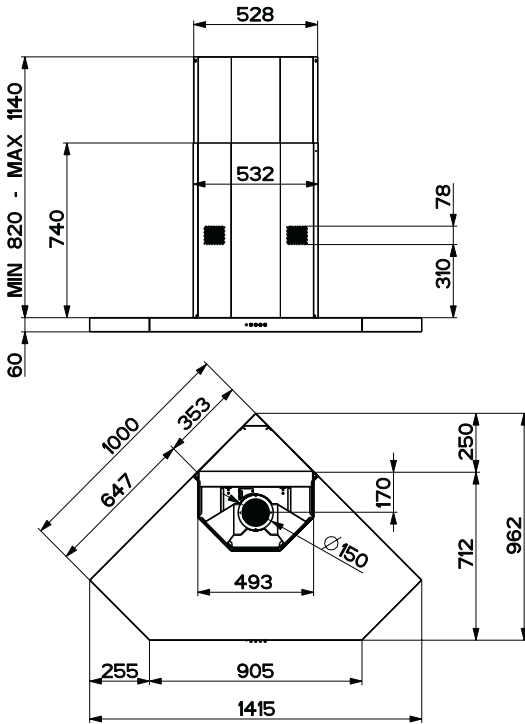
Ref.	Q.ty	Product Components
1	1	Hood Canopy complete with: Controls, Lighting, Fan Unit, Filters
2	1	Telescopic Chimney made up of:
2.1	1	Top Chimney
2.2	1	Bottom Chimney
9	1	Reduction Flange \varnothing 150-120 mm
14.1	2	Air Outlet Connector Extension
15	1	Air Outlet Connector

Ref.	Q.ty	Installation Components
7.1	1	Hood Coupling Support
7.2.1	2	Top Chimney Fixing Brackets
7.5	2	Safety Brackets
11	16	Plugs
12a	16	Screws 4.2 x 44.4
12e	6	Screws 2.9 x 9.5
12r	2	Screws 4.2 x 12.7

Q.ty	Documentation
1	Instruction Manual

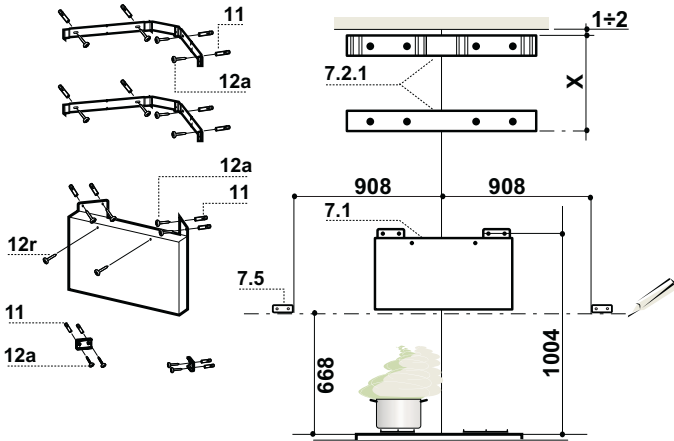


Dimensions



INSTALLATION

Drilling the Wall and Fixing the Brackets

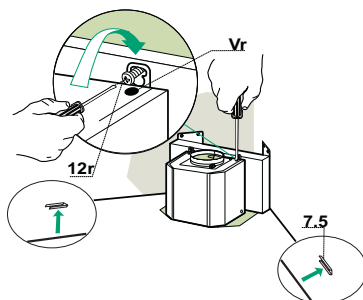


Mark the following on the Wall:

- Rest the Bracket **7.2.1** as indicated 1-2 mm from the ceiling or top limit.
- Mark the centres of the Bores in the Bracket.
- Rest the Bracket **7.2.1** as indicated X mm under the first bracket (X = height of the Top Chimney provided).
- Mark the centres of the Bores in the Bracket.
- Rest the Hood Coupling Support **7.1** as indicated 1004 mm above the Cooker Top, checking that the fixing bores are equidistant from the corner of the wall.
- Mark the centres of the Bores in the Support.
- Drill the points marked with a \varnothing 8 mm drill bit.
- Insert the plugs **11** into the holes.
- Draw a Horizontal line on the Wall 668 mm above the Cooker Top.
- Rest the Safety Brackets **7.5** as indicated on the reference Horizontal line, at a distance of 908 mm from the corner of the wall, checking that they are level.
- Mark the centres of the Bores in the Safety Brackets.
- Drill the points marked with a \varnothing 8 mm drill bit.
- Insert the plugs **11** into the holes.
- Fix the Brackets and the Support, using the Screws **12a** (4.2 x 44.4) provided.
- Fasten 2 Screws **12r** (4.2 x 12.7) provided into the Hood Canopy fixing holes, positioned on the front plate of the Hood Coupling Support, leaving a space of 5-6 mm between the support and the head of the screw.

Fitting the Hood Canopy

- Before hooking up the Hood Canopy, lock the 2 Screws **Vr** located at the Hood Canopy connection points.
- Hook up the Hood Canopy to the Screws **12r** taking care to ensure that the Safety brackets **7.5**, fixed to the wall, enter the Side Housings provided.
- Tighten the support Screws **12r** until they lock.
- Adjust Screws **Vr** to level the Hood Canopy.

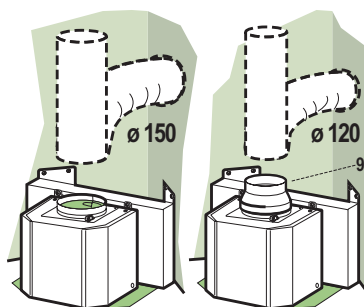


Connections

DUCTED VERSION AIR EXHAUST SYSTEM

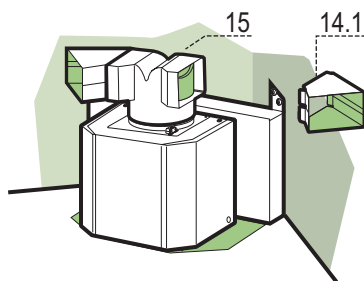
When installing the ducted version, connect the hood to the chimney using either a flexible or rigid pipe \varnothing 150 or 120 mm, the choice of which is left to the installer.

- To install a \varnothing 120 mm air exhaust connection, insert the reducer flange **9** on the hood body outlet.
- Fix the pipe in position using sufficient pipe clamps (not supplied).
- Remove any activated charcoal filters.



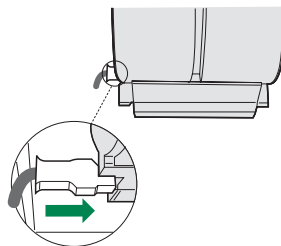
RECIRCULATION VERSION AIR OUTLET

- Push fit connection **15** onto the hood body outlet.
- Insert the connection extension pieces laterally **14.1** in connection **15**.
- Make sure that the outlet of the extension pieces **14.1** is horizontally and vertically aligned with the chimney outlets. If this is not the case, adjust the position by either reversing the connection extension pieces **14.1** and then reassemble as described previously.
- Ensure that the activated charcoal filters have been inserted.



ELECTRICAL CONNECTION

- Connect the hood to the mains through a two-pole switch having a contact gap of at least 3 mm.
- Remove the grease filters (see paragraph Maintenance) being sure that the connector of the feeding cable is correctly inserted in the socket placed on the side of the fan.



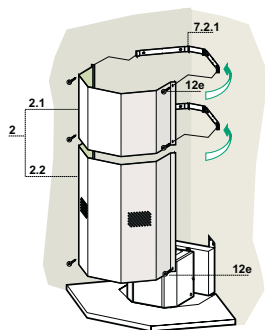
Flue assembly

Upper exhaust flue

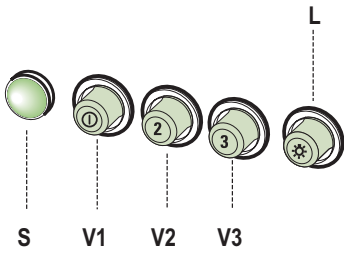
- Slightly widen the two sides of the upper flue and hook them behind the brackets **7.2.1**, making sure that they are well seated.
- Secure the sides to the brackets using the 4 screws **12c** (2,9 x 9,5) supplied.

Lower exhaust flue

- Slightly widen the two sides of the flue and hook them between the upper flue and the wall, making sure that they are well seated.
- Fix the lower part laterally to the hood body using the 2 screws **12c** (2,9 x 9,5) supplied.



USE



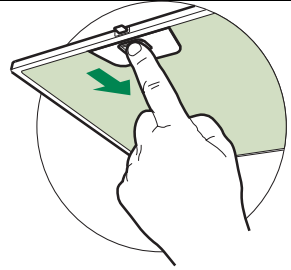
L	Light	Switches the lighting system on and off.
S	Led	Motor running led.
V1	Motor	Switches the extractor motor on and off at low speed. Used to provide a continuous and silent air change in the presence of light cooking vapours.
V2	Speed	Medium speed, suitable for most operating conditions given the optimum treated air flow/noise level ratio.
V3	Intensive	Maximum speed, used for eliminating the highest cooking vapour emission, including long periods.

MAINTENANCE

Grease filters

CLEANING METAL SELF- SUPPORTING GREASE FILTERS

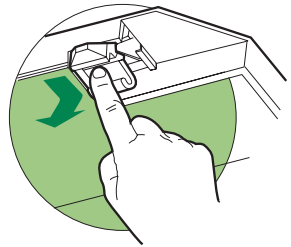
- The filters must be cleaned every 2 months of operation, or more frequently for particularly heavy usage, and can be washed in a dishwasher.
- Remove the filters one at a time by pushing them towards the back of the group and pulling down at the same time.
- Wash the filters, taking care not to bend them. Allow them to dry before refitting.
- When refitting the filters, make sure that the handle is visible on the outside.



Activated charcoal filter (Recirculation version)

REPLACING THE ACTIVATED CHARCOAL FILTER

- The filter is not washable and cannot be regenerated, and must be replaced approximately every 4 months of operation, or more frequently for particularly heavy usage.
- Remove the metal grease filters
- Remove the saturated activated carbon filter by releasing the fixing hooks
- Fit the new filter by hooking it into its seating
- Replace the metal grease filters.



Lighting

LIGHT REPLACEMENT

20 W halogen light.

- Remove the 2 screws fixing the Lighting support, and pull it out of from the Hood.
- Extract the lamp from the Support.
- Replace with another of the same type, making sure that the two pins are properly inserted in the lamp holder socket holes.
- Replace the Support, fixing it in place with the two screws removed as above.

